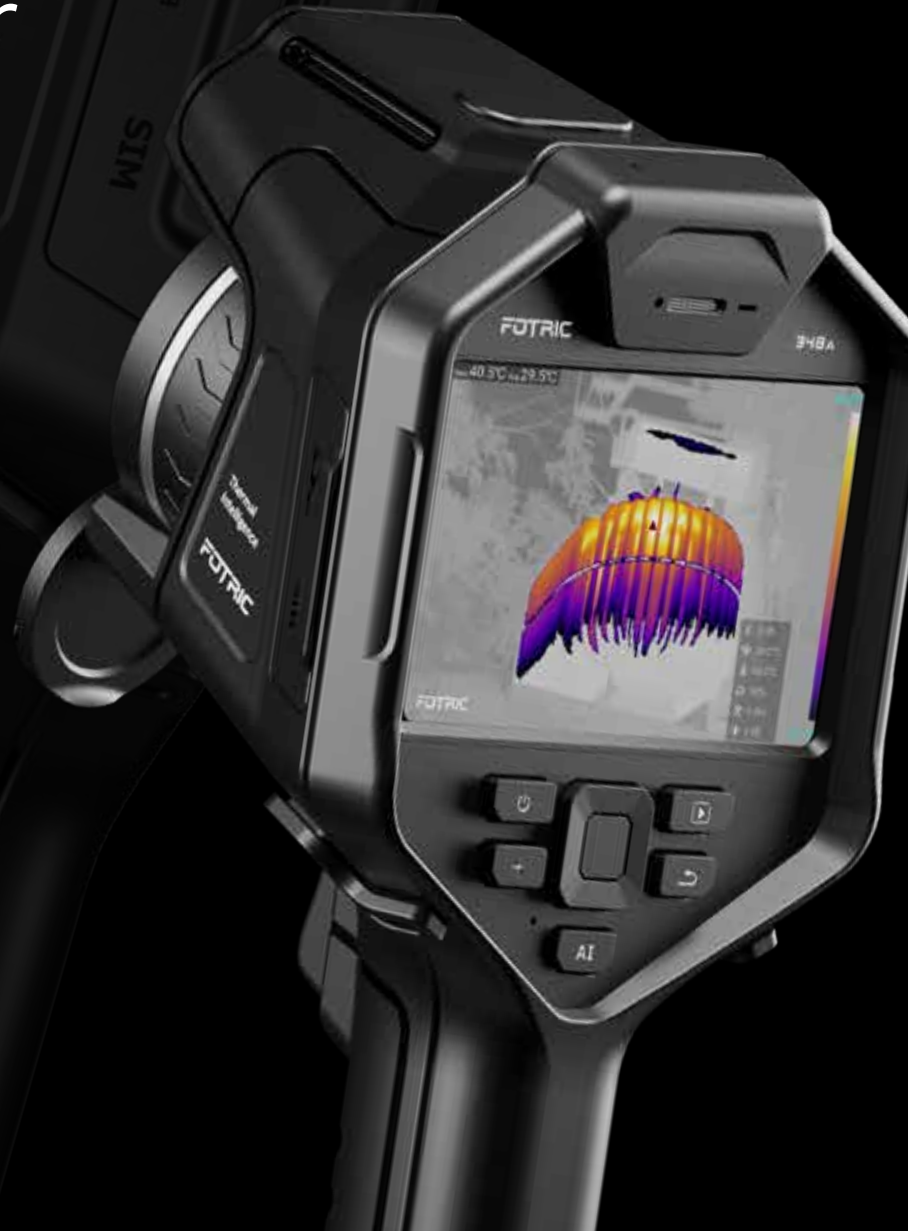


FOTRIC
— Thermal Intelligence —

FOTRIC 340 Series

Artificial Intelligence Thermal Imager



348A

347A

346A

345M

Superior Imaging

FOTRIC MagicThermal Multi-color Dynamic function allows advanced imaging performance under complex diagnoses.

Superior in-picture smart isolation of hot-spots for easy live analysis of areas of interest.

Cutting-edge Images

Exceptional resolution for sharp and bold images:

- Large 5" LCD vibrant screen of 1280*720 pixels.
- Extra sharp digital camera of 13-megapixels.

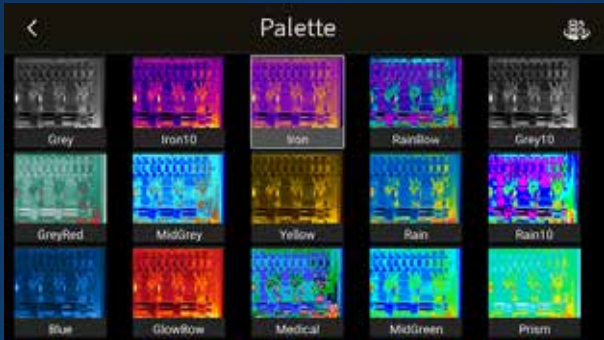
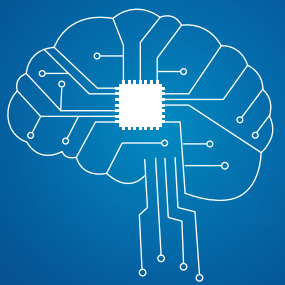
Magic at your fingertips

- MagicThermal's first class algorithm simplifies the visual identification of equipment failures like never before.
- One tap on its quick-response screen to highlight specific areas, leaving the unwanted areas on shades of gray.
- Enhanced navigation of Picture-in-Picture for more flexible editing.

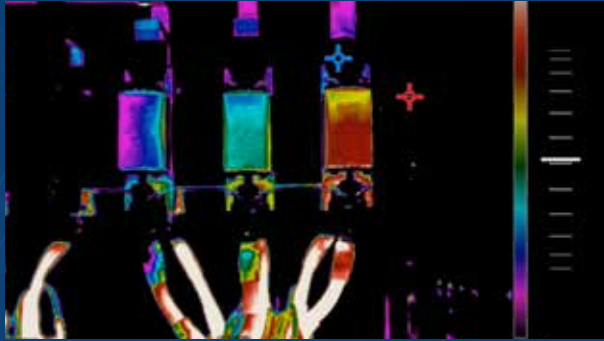


AI Boosted Performance

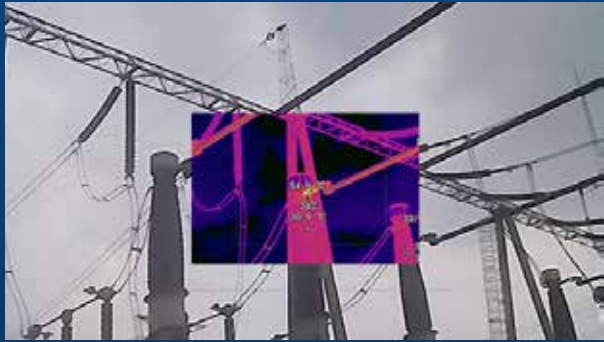
- Hand work eased like never before with programmable AI Quick-Access button.
- Complimentary access to AI Face Detection feature.



Switch to "Palette"



Switch to "Touch Scale"



Switch to "Picture-in-Picture"

Link to "Gallery"
Adjust for "Temperature Range"
Adding "Text Annotation"
Switch for "QR Scanning"



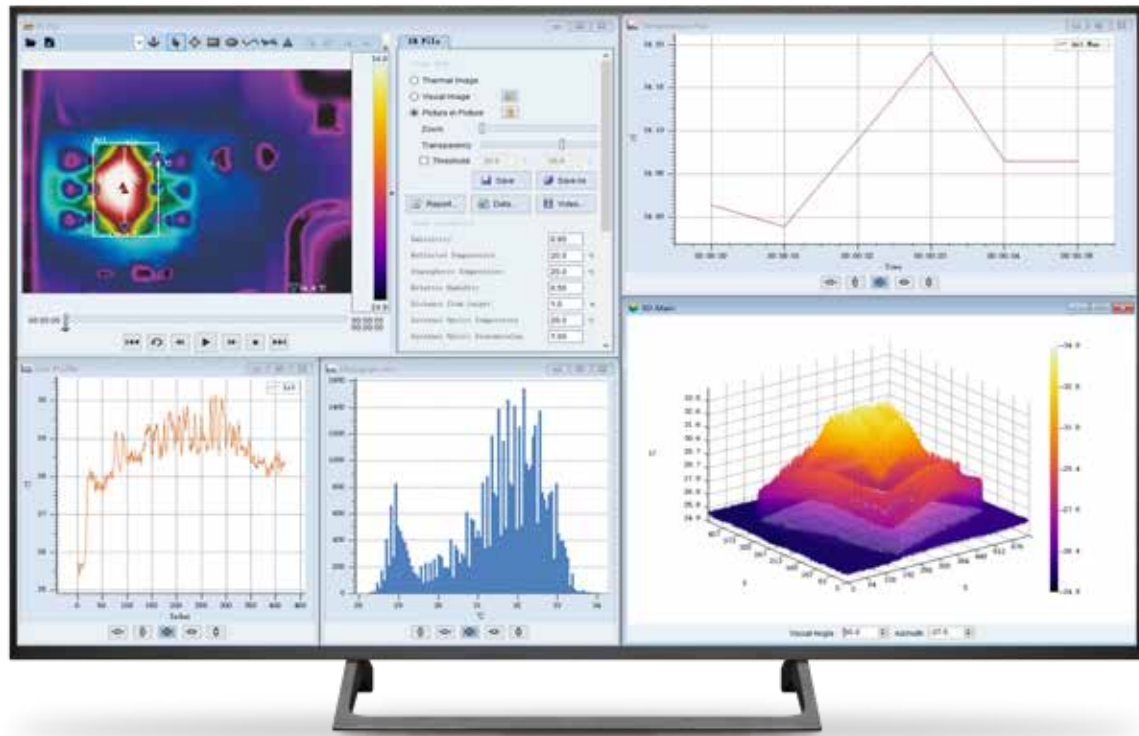
Exceptional Field Work

FOTRIC fine-tuned new series is equipped to offer a superior experience in the toughest environments.

Enhanced with mighty analyzing features for accurate failure identification and advanced temperature differentials calculation



- Professional laser meter for distance and area measurement. (*Only for 340A series)
- Built-in temperature difference calculator for smart analysis.
- Full-range radiometric video for comprehensive post-analysis.
- Favorite images/videos quick selection within the gallery.
- Image Annotation through voice, on-screen text tags, GPS for tailor-made visual report.
- Outstanding battery life performance for concerns-free survey sessions.
- Modern Cobra-design and ergonomic grip for comfortable long shifts.



Diversified Reporting Work Flow

- In-Depth analyses and reports through AnalyzIR pro software included with the camera.
- Fotric AnalyzIR pro system support read-out of thermal measurements by temperature plot, Histogram and 3D graph.
- Fast and simplified reporting function with varies of templates.



- Various Quick Transfer
- Easy-to-choose multiple data transfer options for better mobility.



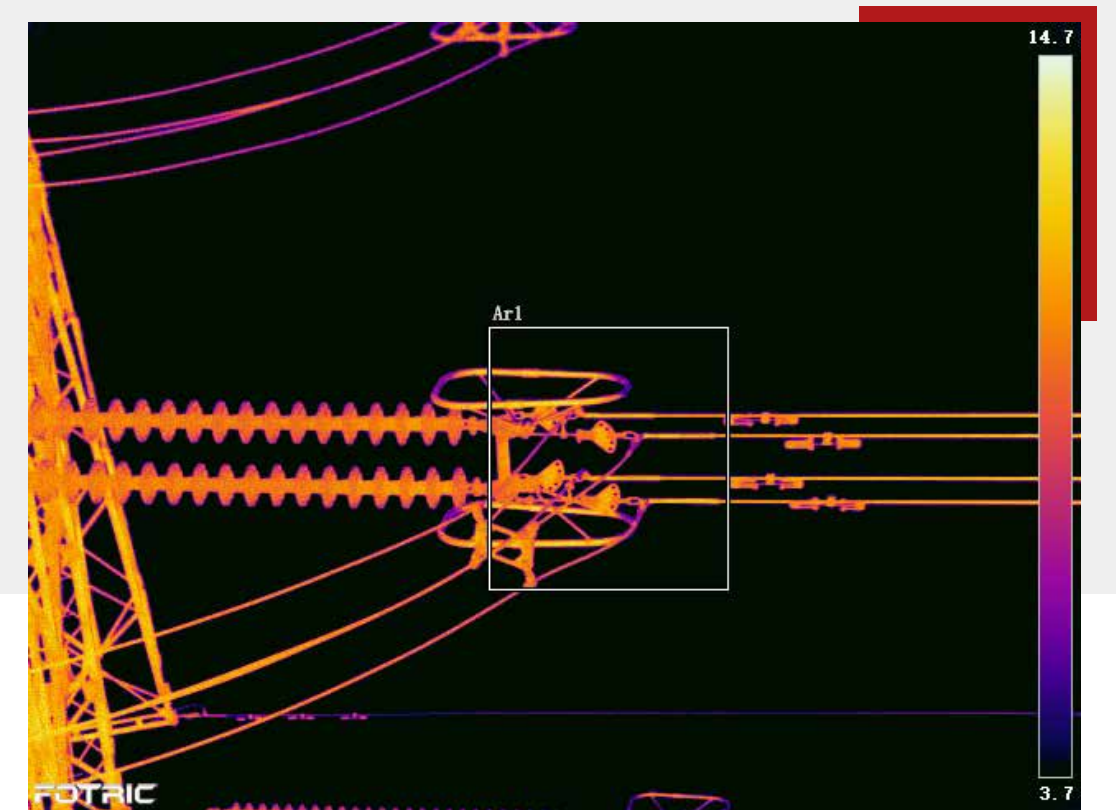
TurboFocus on the Go

Fast,
Precise,
Noiseless.

*Only for 340A series



- Long-distance small objects can be accurately measured with easy-switching focus modes: Auto, Laser-aided, Continuous and Manual focus.
- FOTRIC TurboFocus is fast, precise and noiseless.
- Quick auto-recognition and calibration when interchangeable lenses are replaced to ensure accuracy and quality of measures and pictures.





FOTRIC 340 Series

348A **347A**
346A **345M**



Key Features	348A	347A	346A	345M
Infrared Resolution	640*480	480*360	384*288	320*240
Super Resolution (SR)	1280*960	960*720	768*576	640*480
Thermal Sensitivity(NETD)	<0.04°C@30°C			<0.05°C@30°C
Temperature Measurement Range (smart switch between)	-20°C to 150°C (-4°F to 302°F); 0°C to 650°C (32°F to 1202°F); 200°C to 1200°C (392°F to 2192°F);			-20°C to 150°C (-4°F to 302°F); 0°C to 650°C (32°F to 1202°F);
I FOV with Standard Lens (spatial resolution)	0.68mrad	0.91mrad	1.14mrad	1.36mrad
Digital Zoom (Continuous adjustment of roller)	1x to 8x			1x to 4x
User-definable Spot Markers	8			4
User-defined Measurement Boxes(rectangle or circle)	8			4
User-defined Measurement Lines	8			1
Minimum Focus Distance	0.25m	0.1m		0.1m
Focus Mode	TurboFocus speedy Intelligent Auto focus system for continuous, laser distance, graphic contrast, manual			Manual
Laser Measurement	Distance, Length and Area			—

Common Features	348A	347A	346A	345M
Filed of View (FOV)	25°×19°			
MagicThermal	Enable MagicThermal multi-color dynamic imaging function, which can be used in real-time thermal image. Display the color thermal imaging of the target area by touch, while the other areas are displayed in black and white thermal imaging			
AI Programmable Key	Yes, for quick start			
Navigation Satellite System	Yes, support GPS/BeiDou			
Image Annotation	Favorites and AutoNaming			
Infrared Spectral Band	7μm~14μm			
Detector Type	Uncooled infrared focal plane detector			
Detector Pitch	17μm			
Frame Rate	30Hz			
Lens Options	Optional wide-angle lens,telephoto lens and ultra telephoto lens			Optional wide-angle lens and telephoto lens
Lens Recognition	Yes			
Storage Memory	128GB micro SD card			32GB micro SD card
Batteries (field-replaceable, rechargeable)	3 Lithium-ion rechargeable batteries (7.4V, 3500mAh)			2 Lithium-ion rechargeable batteries (7.4V, 3500mAh)
Ergonomic Design	Yes			
Standard Configuration	Infrared thermal imager, lens, lens cover, batteries, battery charger, power adapter, USB type-C to USB interface cable,micro HDMI to HDMI interface cable, SD card, SD card reader, accessory bag (wrist strap, 2 wrist strap holders, 2 M4 * 8 screws, lanyard, Allen wrench), information bag (packing list,user manual, calibration certificate, certificate of QC, certificate of inspection, warranty card, USB), portable soft bag, hard portable case			

Temp Analysis	
Accuracy	± 2°C or ± 2 %, whichever is greater (ambient temp between 15°C~35°C)
On-Screen Temperature Test	Temp Rising Test, Temp Differentiation Test
Temperature Measurement	Center-point and center-box
Highest/Lowest Temp Spot Mark	Yes, full-screen and measurement boxes both with highest/lowest temp spot marker
On-screen Analysis	Emissivity, Partially emissivity, Reflection temperature, Ambient temperature, Humidity, Distance
Sound Alarms	Area alarm; high temperature alarm and low temperature alarm
Color Alarms (temperature alarms)	High temperature, low temperature, and isotherms (within range)
Image Display	
Display	Gorilla Glass Explosion-proof IPS LCD Display pixels: 1280*720, Display size: 5inch (landscape)
Build-in Digital Camera (visible light)	13-megapixel, industrial grade digital camera
LED Light (torch and flash lamp)	Yes
Picture-in-Picture	Yes, resizable and movable
Palettes	2 MagicThermal palettes, 15 standard palettes, 15 Inverted palettes
Temp Scale	Touch-screen, auto, manual
Minimum Temp Span (Manual)	2°C (3.6°F)

Data Storage	
Analyze Radiometric Image Data (On-screen)	Yes
Analyze Radiometric Video Data (On-screen)	Yes
Image File Formats	Standard JPEG with measurement data included
Video File Formats	Full radiation thermal image video in IRS format; standard MPEG4 non radiation video;
Gallery	Image preview and analyze, video preview and analyze
PC Software	Fotric AnalyzIR, WLIR
Voice Annotation	200 seconds built-in microphone and speaker on still image and video
Text Annotation	Yes
Remote Display View	Radiometric IR Video Streaming over type-c3.0 interface; Non-radiometric IR video streaming over HDMI HD interface
Remote Control Operations	Remote display and control operation through Fotric AnalyzIR software
Auto Capture	Yes, 1Hz to 12Hz frame rate adjustable; 2s to 60m59s interval adjustable
Battery	
Battery Life	Over 4 hours per battery
Battery Charging Time	2.5 hours to 90% full charge
Battery Charging System	Two-bay battery charger with LED display (12V, 3A)
AC Operation	AC operation with included power supply (100V ac -240V ac, 50/60Hz)
Power Saving	User-selectable screen-off modes

General Specifications	
Device Interface	Support USB Type-C 3.0, Micro HDMI and SD card
USB Interface	USB type-C type; conforms to USB 3.0 / 2.0 specification, supports USB OTG; USB 3.0 has a maximum speed of 5Gbps; USB 2.0 supports a maximum speed of 480Mbps, and is downward compatible with full speed (12Mbps) mode
HDMI Interface	Micro HDMI type, Comply with HDMI 1.4 specification, support 1080p image video transmission at 60Hz frame rate
SD Card Interface	Support SD 3.0, the highest speed is 104MB/s, hot plug is supported; support SD, SDHC, SDXC card, the maximum expansion is 2TB; with read-write indicator;
Laser Pointer	Independent key activation; Laser level: 2; Wavelength: 635nm; Power: <1mW
Operating Temperature	-20°C to +50°C (-4°F to 122°F)
Storage Temperature	-40°C to +70°C (-40°F ~ 158°F)
Relative Humidity	<95%RH
Safety	EN 62368-1:2014+A11:2017 (Power Supply)
Vibration	2g (GB/T 2423.10-2008/IEC 60068-2-6:1995)
Shock	25g(GB/T 2423.5-2019/IEC60068-2-27:2008)
Electromagnetic Compatibility	EN 61326-1:2013 (immunity) EN 61326-1:2013 Class A (emission) FCC 47 CFR Part15 Class A (emission)

General Specifications	
Drop	Engineered to withstand 2 meters (6.5 feet) drop with standard lens
Enclosure Rating	IP54 (protected against dust, limited ingress; protection against water spray from all directions), GB/T 4208-2017/IEC60529:2013
Size (H x W x L)	312.8mm × 123.3mm × 139.2mm
Tripod	UNC ¼"-20 interface
Weight (battery included)	<1.0kg (lens not included)
Hard Case	Hard rubber: PC + ABS, Soft rubber: TPE, Magnesium alloy, Flame retardant grade: UL94 HB
Warranty	2 years (standard), extended warranties are available, 10 years for core detector
Recommended Calibration Cycle	2 years (assumes normal operation and normal aging)
Supported Languages	English, Spanish, Korean, Traditional Chinese

Optional Lens	348A	347A	346A	345M
Wide-angle	44° × 34° (<0.1m)	44° × 34° (<0.1m)	44° × 34° (<0.1m)	44° × 34° (<0.1m)
Telephoto	12° × 9° (<1.0m)	15° × 11° (<0.25m)	15° × 11° (<0.25m)	15° × 11° (<0.25m)
Ultra Telephoto	7° × 5° (<3.0m)	7° × 5° (<1.0m)	7° × 5° (<1.0m)	—



Innovation Excellence Integrity

Equipment described herein may require EU, US and UNSC authorization for export purposes.

Imagery for illustration purposes only.

Specifications are subject to change without notice.

FOTRIC INC. All Rights reserved.

info@fotric.com

www.fotric.com

FOTRIC
— Thermal Intelligence —